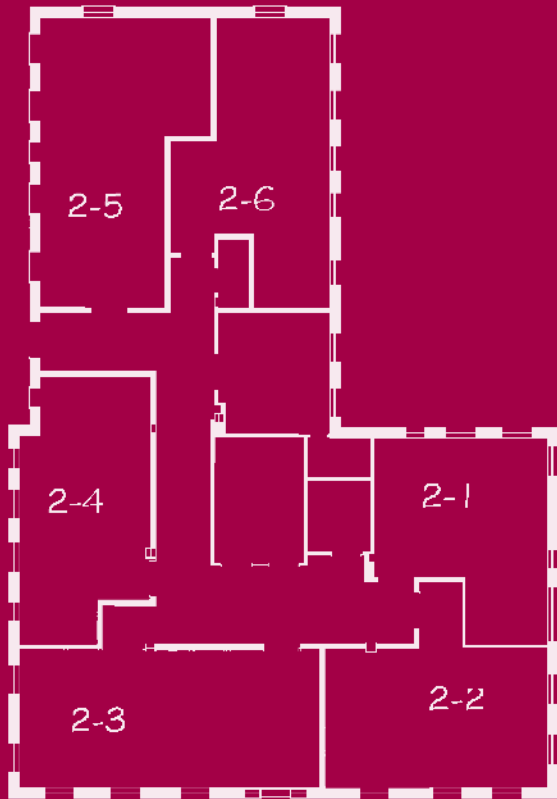
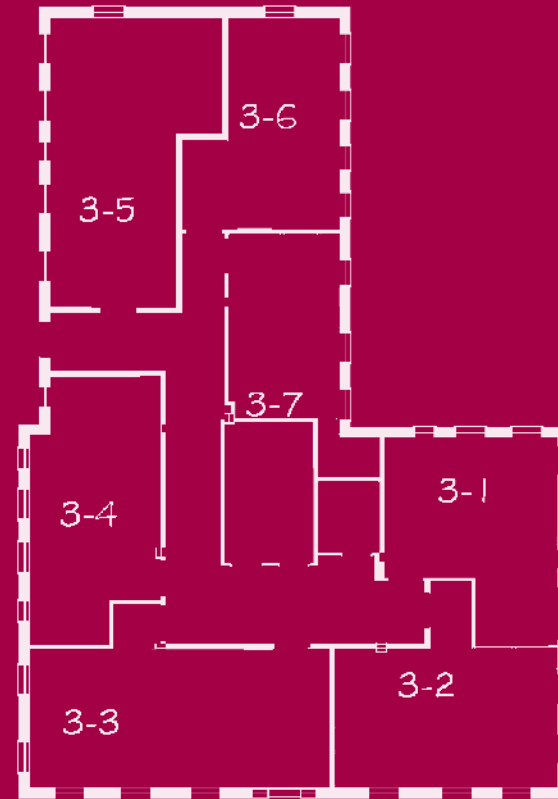


The Gary Home

Residential Care Suites



Second Floor



Third Floor

Prices Effective January 2008

2-1	275 SF	\$4,000	3-1	275 SF	\$4,000
2-2	316 SF	\$4,100	3-2	316 SF	\$4,100
2-3	387 SF	\$4,350	3-3	408 SF	\$4,350
2-4	293 SF	\$4,100	3-4	295 SF	\$4,100
2-5	327 SF	\$4,350	3-5	314 SF	\$4,350
2-6	370 SF	\$4,000	3-6	228 SF	\$3,890
			3-7	187 SF	\$3,600

One Time Community Fee: \$1,500

Double Occupancy: \$1,500